




10/1236 Canterbury Rd, Roselands, NSW 2196
Call Agent

 Apartment 2  2  1 


STYLISH BOUTIQUE APARTMENT

Jewel Roselands is more than an apartment complex – it's a community of confidence. A standout design, cool, calm interiors, and in the heart of a friendly, lively, upbeat neighbourhood, you're assured an enviable lifestyle. Maximizing open space, natural light, and free flow design, these centrally located apartments are a stunning commitment to excellence and ease.

These oversized apartment offer a lavish indoor and outdoor lifestyle showcasing state of the art finishes and inclusions. Situated in a security building these spacious 2 bedroom apartments feature modern open plan kitchen, deluxe bathrms, internal laundry and dryer, car space with storage and large courtyard. Setting a new standard for contemporary living, this exciting and stylish designer building has been meticulously designed with personality and practicality in mind.

With easy access to M5 motorway and located moments to Roselands, transport, schools and parks and only 16kms from Sydney's CBD, these centrally located apartments are a stunning commitment to excellence and ease.

For Sale \$585.000 negotiable

Council Rates \$298.30pq

Water Rates \$185.25pq

Strata Levies \$683.00 pq

Contact: George Karabalios 0411 505 111 or george@eastsiderealty.com.au or sales@eastsiderealty.com.au

Open for Inspection

By Appointment.

Property Features

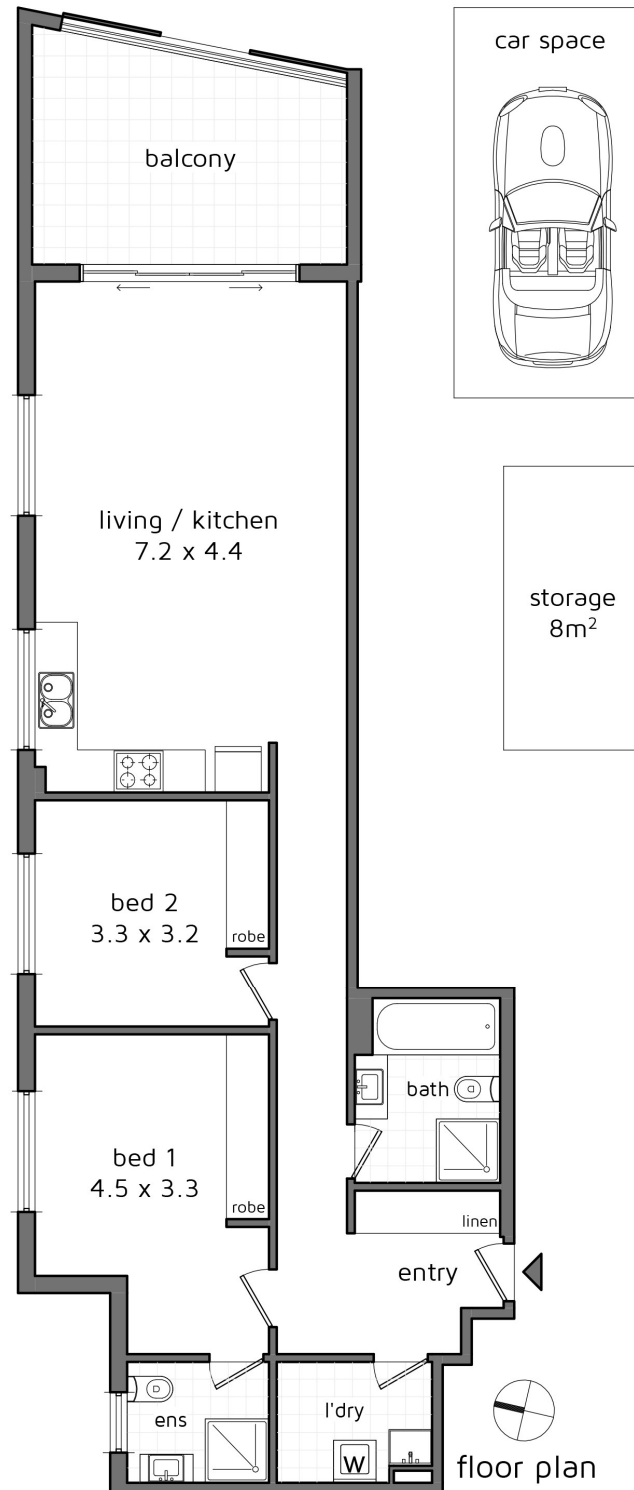
- 2 Large bedrooms, built-in-robos & master en-suite
- Generous living and dining leading to balcony
- Modern open plan kitchen, internal laundry & dryer
- Security building with lift access, car wash bay
- Moments to Roselands, transport, parks and schools

Listed By

□ George Karabalios
 Phone: (02) 9314 7955
 Mobile: 0411 505 111



Floorplan



8/1236 Canterbury Road, Roselands

This diagram is for illustrative purpose only. All reasonable care has been taken in the preparation, but no warranty is given as to the accuracy of the information. This document does not constitute any part of any offer or contract. Dimensions shown are approximate only. Prospective purchasers must rely on their own enquiries. Floor plan by Igor Nedic 0410581805 / spinpix.com.au